



## **VOPTECH RANGE OF PRODUCTS**

- IP PHONE SYSTEM SOLUTION
- HOSPITALITY PHONE SYSTEM SOLUTION
- SIP PA SYSTEM SOLUTION
- SIP INTERCOM SYSTEM SOLUTION
- USER TERMINALS

**VOPTECH**  
SIP Solutions Expert

Made to Fit Your Business



**IP10/IP10P**

- Highlights:**  
2 SIP Lines, HD Voice  
4 Soft Keys  
128\*48 LCD Display  
PoE Optional  
RJ9 Headset Jack



**IP20P**

- Highlights:**  
2 SIP Lines, HD Voice  
4 Soft Keys  
4 DSS Keys  
128\*48 LCD Display  
PoE  
RJ9 Headset Jack  
Support 5 Ext. Console



**IP40P**

- Highlights:**  
4 SIP Lines, HD Voice  
4 Soft Keys  
8 DSS Keys  
128\*64 LCD Display  
PoE  
RJ9 Headset Jack  
Support 5 Ext. Console

IP series HD business SIP Phones are ideal for both the small office and general enterprise users. Enterprise SIP phone's new design and enhanced features address the need for an elegant IP handset solution for the executive office at a highly competitive price.

IP series HD business SIP Phones are the Internet based voice network phone terminal, which adopts multiple voice control protocols and voice compression coding methods to directly convert analog voice into IP packet for internet transport, thus effectively using the existing bandwidth to provide PSTN quality voice service.

### Phone Features

- Supports SIP 2.0 (RFC3261) and correlative RFCs
- Supports SIP UDP/TCP/TLS
- SIP support SIP domain, SIP authentication (none, basic, MD5), DNS name of server, Peer to Peer /IP Call

### Audio Features

- HD Voice, HD Handset
- Codec: G.711A/u, G.7231 high/low, G.729AB, G.722, G.726-32
- DTMF: In-band, Out-of-band(RFC 2833) and SIP INFO
- Full-duplex hands-free speaker phone with AEC
- Voice Activity Detection (VAD)
- Comfort Noise Generation (CNG) Adaptive jitter buffer
- Packet loss concealment (PLC)
- SRTP
- Mute

### Call Features

- Call forwarding (busy/ no answer/always),
- Call transfer ( unattended/ attended/ semi-attended )
- Call holding / waiting, 3 way call conference
- BLF list, Join call, Call pickup/ park/ back
- Redial, Call completion
- Hot desking
- SIP messaging , MWI
- Flexible dial plan
- Barring function for outgoing calls
- Do not disturb, Auto answer, Caller ID display
- CLIR(rejects anonymous calls), CLIP(to make an anonymous call)
- Dial without registration
- Call logs with missed calls/ incoming calls/outgoing calls. Each support 300 records
- Phonebook 500 records, Speed Dial (abbreviated dialing)
- Hotline/Warm-line
- Call rejection, Black List/ White List
- Intercom/Intercom barge
- Password dial, DTMF hidden
- Action URL/ active URI
- Voice codec setting for each SIP line
- Multicast
- LDAP, XML phonebook
- Web dial
- Keypad lock, Emergency call

### Maintenance & Management

- WEB ,telnet and LCD menu management
- Recover firmware and factory reset through POST mode
- Upgrade firmware via HTTP, HTTPS, FTP, TFTP
- DHCP option66 and custom option for auto provisioning
- Auto Provisioning to upgrade configuration file with AES(256) encryption
- TR-069 and Syslog

### Network&Security Features

- WAN / LAN: 10/100M Ethernet ports
- Bridge mode and route
- PPPoE for xDSL
- 802.3af POE ( optional )
- VLAN ( Voice VLAN/Data VLAN )
- 802.1X
- NAT (NAPT)
- NAT transverse :Support STUN client
- DHCP client on WAN/ DHCP server on LAN
- Main DNS and secondary DNS server
- DNS Relay
- SNTP Client
- Firewall and DMZ
- Web management access restricted
- VPN(L2TP/Open VPN)

### Physical Features

- Adapter Input: AC 100-240V
- Adapter Output: DC 5V/1A
- WAN Port -10/100 BASE-T RJ-45 for LAN
- LAN Port-10/100 BASE-T RJ-45 for PC
- Headset : RJ9
- Power consumption: IDLE:2.5W Active: 2.8W
- Display Resolution: 128x48 pixels(IP10&IP20P) 128x48 pixels(IP40P)
- Operation Temperature: 0~40°C
- Relative Humidity: 10~65%

### Multi-languages

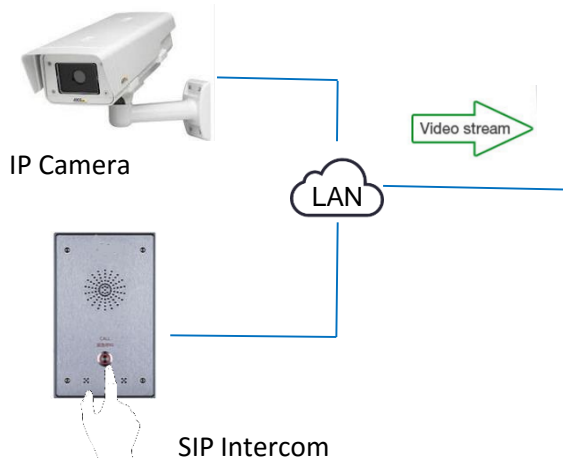
- English
- German
- French
- Italian
- Spanish
- Spanish(South America)
- Hungarian
- Polish

Professional UI



### Highlights:

- 6 SIP Lines, HD Voice
- 100 DSS Keys, PoE
- Dual Giga Ports
- 720P Video
- 7" TFT 800x480 Capacitive Multi Touch Screen



Video Popup

### Video Linkage Application

- Video Linkage without Server
- Keep Using Exist IP Camera System
- One Touch Video Surveillance
- And Audio Monitor

V60 provides the complete desk phone solutions with flexible functionality, HD Voice Quality, and highly easy operation. It is absolutely an excellent Desk Video Phone for small to large sized business, as well as mission-critical Enterprise Business.

Especially, the V60 is built with the latest Freescale Core Quad solution, 7" Capacitor Multiple Touch Screen with Camera, and the Android 4.2 platform. It is not just offering the rich features, applications, and value added for Business. But, it is also a Video phone at an affordable price.

### Phone Features

- Android 4.2 OS
- Supports high quality video call
- Supports SIP 2.0 (RFC3261) and correlative RFCs
- Supports 6 SIP servers and Backup SIP proxy servers.
- Supports SIP UDP/TCP/TLS
- Supports HDMI
- Supports USB Host
- Supports Acoustic echo cancellation (AEC) - 128ms max filter length in duplex speaker phone mode
- 7" TFT 800x480 Capacitive Multi Touch Screen

### Audio Features

- Wideband codec: G.722
- Narrowband codec: G.711(A/μ), G.723.1, G.729AB, iLBC, AMR
- DTMF: In-band, Out-of-band(RFC 2833) and SIP INFO
- Full-duplex hands-free speaker phone with AEC (Max filter length - 128ms).
- Voice Activity Detection (VAD)
- Comfort Noise Generation (CNG) Adaptive jitter buffer
- Packet loss concealment (PLC)
- Audio format: WAV/MP3/OGG

### Advanced Features

- Video codec: H.264 / H.263
- Image codec: JPEG/PNG/BMP/GIF
- Video format: MP4/3GP/FLV
- Video call resolution: QCIF / CIF / VGA / 4CIF (1280x720P Optional)
- Bandwidth selection: 64kbps~4Mbps
- Frame rate selection: 10~30fps
- Picture-in-Picture (PIP)
- Video from remote site can be displayed in full screen
- Supports up to 6 video display mode

### Call Features

- Call Forwarding, Call Transfer (blind/attended/alert)
- Call Holding, Call Waiting, Call Conference
- BLF List, Join Call, Pickup
- Call Completion, Hot desk function
- Soft DSS Key (max 128), Auto Redial / un-redial
- Support multi line and pre-dial
- Support messaging and MWI
- Voice recording during talking /local
- Flexible dial plan, Hotline/Warm-line
- Call Rejection, Barring function for outgoing calls
- Do Not Disturb, Auto Answer (Hands- free / Headset)
- Caller ID display, CLIR (rejects anonymous calls)
- CLIP (to make an anonymous call)
- Dial without registration, Supports Call Logs with Missed / Incoming / Outgoing calls, Direct IP call without SIP proxy
- Intercom/Intercom barge, Password dial, Headset ring

### Network&Security Features

- WAN/LAN: support bridge mode
- Supports PoE (802.3af)
- Supports main DNS and secondary DNS server
- Supports VLAN
- Supports SNTP Client
- Supports VPN L2TP / PPTP / IPSec
- Supports SIP SRTP,
- Supports Web HTTP / HTTPS
- Supports QoS: 802.1p/q, DSCP
- Supports MD5 authentication
- Supports Web Filter
- DHCP/ static/ PPPoE
- STUN

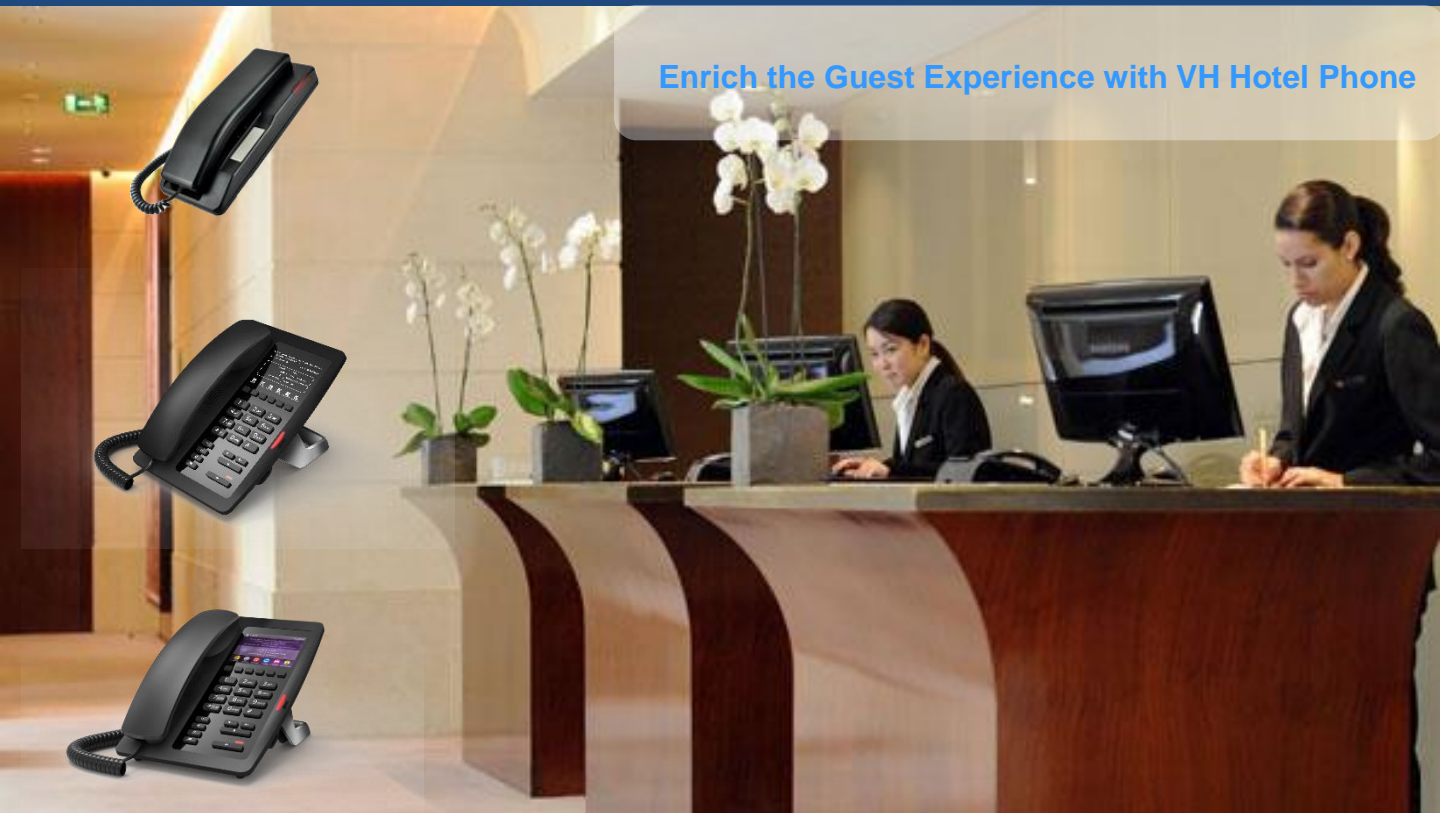
### Maintenance & Management

- Android 4.2
- Supports third party android applications
- Supports Web, Telnet
- Web Management with different account right
- Supports automatic upgrades/ configuration deployment
- Supports encrypted configuration files download with AES
- Supports pushing message
- Supports Auto-Provisioning (DHCP option/ PnP/ Phone flash)
- Supports TR-069
- Supports Web upgrade
- Supports U Disk/SD upgrade
- Supports backup/restore/factory reset data

### Physical Features

- Adapter Input:100-240V
- Adapter Output:12V/1A
- WAN Port -10/100/1000 Base-T RJ-45 for LAN
- LAN Port- 10/100/1000 Base-T RJ-45 for PC
- HDMI Port - Type A
- SD Interface - TF Card Support Upto 32G
- USB Port- USB 2.0
- Power Consumption- Idle: 2.5W/Active: 5W
- LCD Size Diagonal:7 inch (800 x 480) Capacitive touch screen
- Camera- Adjustable Position
- Operation Temperature: 0~40°C
- Relative Humidity: 10~65%
- CPU Freescale Core Quad 1 Ghz
- SDRAM - 1GB DDS3 1066
- Flash- 4GB

Enrich the Guest Experience with VH Hotel Phone



VH02

**Highlights:**  
2 SIP Lines  
1 Programmable Key  
Wall Mount  
Power over Ethernet  
Wan: 10/100M Port



VH03

**Highlights:**  
2 SIP Lines  
6 Programmable Soft Keys  
Power over Ethernet  
Wan/Lan: 10/100M Ports  
HD Voice  
HD Handset



VH05

**Highlights:**  
2 SIP Lines  
3.5 Inch Color Screen  
6 Programmable Soft Keys  
Power over Ethernet  
Wan/Lan: 10/100M Ports  
HD Voice  
HD Handset

### VH03 VH05 Specifications

#### Phone Features

- Vxworks OS
- Support SIP2.0 (RFC3261) and correlative RFCs
- SIP support 2 SIP servers, and backup SIP proxy servers
- Supports SIP UDP / TCP/ TLS
- SIP support SIP domain, SIP authentication (none, basic, MD5) , DNS name of server, Peer to Peer / IP Call

#### Audio Features

- HD voice: HD handset
- Codec: G.711A/u, G.7231 high/low, G.729AB, G.722, G.726-32
- DTMF: In-band, RFC 2833 and SIP INFO
- Full duplex hands- free speaker phone with acoustic echo cancellation
- Voice Activity Detection (VAD), Comfort Noise Generation (CNG)
- Background noise suppression, Adaptive jitter buffers
- Packet loss concealment
- SRTP, Mute

#### Advanced Features

- Call transfer ( unattended/ attended/ semi-attended )
- Call holding, Call waiting
- 3 way call conference
- Capable of 2 way conversation
- Join call, Call pickup, Call park, Call back
- Call completion
- Hot desking
- Auto redial, Pre dial, Redial, Wed dial
- SIP messaging , MWI
- Flexible dial plan
- Barring function for outgoing calls
- Do not disturb
- Auto answer
- CLIR(rejects anonymous calls), CLIP(to make an anonymous call)
- Dial without registration
- Call logs with missed calls/ incoming calls/outgoing calls. Each support 300 records(Web)
- Phonebook 500 records(Web)
- Speed Dial (abbreviated dialing)
- Hotline/Warm-line, Black List/ White List
- Intercom/Intercom barge
- Password dial, DTMF hidden
- Action URL/ active URI
- Voice codec setting for each SIP line
- Multicast
- LDAP, XML phonebook
- Keypad lock, Emergency call

#### Network&Security Features

- Bridge mode and route
- PPPoE for xDSL
- VLAN (Voice VLAN/Data VLAN)
- 802.1X, NAT (NAPT)
- NAT transverse :Support STUN client
- DHCP client on WAN/ DHCP server on LAN
- Main DNS and secondary DNS server
- DNS Relay, SNTP Client
- Firewall and DMZ, VPN(L2TP/Open VPN)
- Ping, tracer, telnet

#### Maintenance & Management

- WEB and telnet management
- Management with different account right
- Recover firmware and factory reset through POST mode
- Upgrade firmware via HTTP, HTTPS, FTP, TFTP
- DHCP option66 and custom option for auto provisioning
- Auto Provisioning to upgrade configuration file with AES(256) encryption
- TR-069 and Syslog

#### Physical Features

- Screen: None(H3), 3.5inch(480x320) color screen
- Adapter Input: AC 100-240V
- Adapter Output: DC 5V/1A
- WAN Port -10/100 BASE-T RJ-45 for LAN
- LAN Port-10/100 BASE-T RJ-45 for PC
- Power consumption: IDLE: 2.5W Active: 2.8W
- Operation Temperature: 0~40°C
- Relative Humidity: 10~65%
- Main Chipset : Broadcom
- SDRAM: 16MB, FLASH: 4MB

#### VH02 Specifications

- SIP (RFC3261, RFC3262)
- DTMF transport (RFC2833)
- SIP INFO and in-band DTMF transport
- Simple Web-based configuration and status check
- Auto-provisioning using TFTP/FTP
- Update phone book remotely via web browser
- Software upgrade via TFTP or FTP
- Voicemail retrieval via keypad or programmable keys
- Basic NAT and NAPT, PPPoE for Xdsl, DHCP Client on WAN, DNS Relay, SNTP Client, Firewall
- QoS:DiffServ /IP Precedence; IEEE 802.3p
- Call hold , call waiting, and call forwarding

Call transfer (blind or consultative), 8 distinctive ring tone, Volume and Ringer level control, DND, Auto answer, Configurable dial plan

Connecting Your Offices Everywhere



### VPX20N Phone System



#### System Capacities

100 IP Extensions, 30 Concurrent Calls  
Recording: 600 hours (.gsm); 66 hours (.wav)  
Voicemail: 600 mins (.gsm); 66 hours (.wav)  
3 Conference Rooms

#### Hardware

DualCore A7 1GMhz DSP  
DDR2 1GB SDRAM  
8GB Storage

#### Trunk

SIP, Embedded 4FXO ports

### VPX100 Phone System



#### System Capacities

500 IP Extensions, 100 Concurrent Calls  
Recording: 75,000 hours (.gsm); 7500 hours (.wav)  
Voicemail: 75,000 hours (.gsm); 7500 hours (.wav)  
36 Conference Rooms

#### Hardware

Intel Dual-core 2.41GHz CPU  
4GB DDR3L RAM  
16GB On board EMMC + 500GB Surveillance Hard Drive

#### Trunk

SIP, 2 Slots for FXO, FXS or GSM, WCDMA, PRI,  
BRI



### Highlights

- HD Voice Codec G.722 for perfect voice quality
- Fax to Email
- Voicemail to Email
- Paging and Intercom function strengthens the working efficiency
- Monitor and Whisper
- Strong security features protect your system from hacking
- SIP over IPV6

### Call Features

- Call Back
- Call Forward, Transfer
- Call Hold
- Call Paging and Intercom
- Call Pickup
- Call Park
- Call Queue
- Call Recording
- Call Routing
- Call Waiting
- Caller ID
- Music On Hold

### PBX Features

- Black List
- BLF (Busy Lamp Field)
- CDR (Call Detailed Record)
- Conference Rooms
- DID (Direct Inward Dialing Number)
- DISA (Direct Inward System Access)
- Distinctive Ringtone
- Action URL / Active URI
- DND (Do Not Disturb)
- DNIS (Dialed Number Identification Service)
- Feature Codes
- FOP (Flash Operation Panel) Status Monitoring
- Follow Me
- IVR (Interactive Voice Responses)
- Mobility Extension
- Multi-Language Prompts
- Multi-Language GUI
- One Touch Recording
- Phone Book
- Phone Provisioning
- Pin Set
- Record File Download
- Ringgroup
- SIP Register with UDP/TCP/TLS
- SIP Trunk
- Skype for SIP
- Smart DID
- Speed Dial
- SRTP (Secure Realtime Transport Protocol)
- T.38 Fax (Pass-through)
- Time Based Rule
- Virtual Fax
- Voicemail & Voicemail to Email

### Codecs&Protocols

- Audio Codecs: G.722/G.711-Ulaw/G.711-Alaw/G.726/G.729/GSM/SPEEX
- Video Codecs: H.261/H.263/H.263+/H.264
- Protocols: SIP (RFC3261)/IAX2
- DTMF: RFC2833/SIP INFO/In-Band

### Network Features

- DDNS Client
- DHCP Server
- IPv4/IPv6/IEEE802.1Q
- IP Assignment (PPPoE/DHCP/Static)
- SNMP v1/v2
- Static Route Table
- Trouble Shooting (Ping/Traceroute)
- VPN Client (N2N/L2TP/PPTP/OpenVPN/IP Sec)
- VPN Server (PPTP/L2TP/OpenVPN/IP Sec)
- TR069

### Security Features

- Refuse SIP Register DoS
- Refuse Abort Invite DoS
- Refuse SSH Login DoS
- Firewall

### Environment

- Working Temperature: 0 ~ 40° C
- Storage Temperature: -20 ~ 55° C
- Humidity: 5 ~ 95% Non-condensing

### VPX20N Hardware Interface&Packing

- 1 Reset Button
- 1 Power Interface
- 2 Ethernet Interfaces
- 4 FXO Ports
- 1 USB interface
- 1 Console
- Inner Box Dimension: 280 mm × 150 mm × 65 mm
- G.W./Unit: 0.8KG
- Carton Dimension: 340 mm × 330 mm × 330 mm
- Units/Carton: 10 Units
- G.W./Carton: 10KG

### VPX100 Hardware Interface&Packing

- HDMI (High-Definition Multimedia Interface)
- 2 x 1000M Ethernet Ports
- Audio in/out
- USB 3.0 + USB 2.0 (Extended Storage)
- 2x Module Slots
- Inner Box Dimension: 440 mm × 222 mm × 44 mm
- G.W./Unit: 2.66KG
- Package Weight: 4.5KG
- Carton Dimension: 550 mm × 310 mm × 90 mm
- Units/Carton: 3 Units
- G.W./Carton: 13.5KG



## SIP-enabled VoIP Indoor Emergency Intercom –DP20



Bank intercom



School intercom



Factory intercom

**VOPTech DP20 SIP Intercom, carrying VOPTech's 6+ years industrial experience in technology and product design, Combining IP technology together with industrial intercom perfectly. DP20 SIP intercom can be easily configured in varies application scenarios like bank, schools, mining, cities, etc.**

### SIP

#### SIP

The most popular and compatible standard protocol - SIP - enables delivery of worry free communication and connectivity.



#### Protection

Enclosure designed on International Protection (IP) markings to protect against intrusion – accidental or intentional - waterproofed to IP54



**Short Circuit Input&Output**  
Connect kinds of detector like mist, door lock etc. Issue alarm or report once it is triggered.



#### HD Voice

High definition voice using wideband G.722 coding produces clearer sound quality and extends the frequency range.



**External Audio Output**  
Supports 3.5mm audio interface, can connect to external high power speaker



#### Anti-tamper

Alarm sounds if/when cover is removed from the housing and reports the action to the control center.



#### Multi-function

The system is capable of performing multiple functions, i.e. intercom and and single device paging, and can be configurable with additional features.



#### Wide Range temperature adaptability

The system design adapts to operating under various environmental conditions and temperatures (supports temperatures ranging from 40 to +70 Celsius.)

### Generic

- 2 SIP Lines
- PoE Enabled
- Full-duplex speakerphone (HF)
- Intelligent DSS Keys (Speed Dial/intercom etc)
- Omnidirectional pickup
- 2 embedded short-circuit output relays
- 2 embedded short-circuit input relays
- Embedded anti-dismantlement alarm
- Record voice during the call(optional)
- All in ONE intercom and paging service and Security Linkage
- Wall-mount installation
- Multi-cast

### Call Features

- Voice Intercom
- Speed Dial(speed dial key)
- Auto-Answering (per line)
- Voice Message (on server)
- Local 3-way Conference

### Phone Features

- Support SIP 2.0 and related RFCs
- Programmable DSS keys
- Network Time Synchronization
- Action URL / Active URI

### Audio

- Wideband CODEC: G.722
- Narrowband CODEC: G.711a/u, G.723.1, G.726-32K, G.729AB
- Full-duplex Acoustic Echo Celler (AEC) – Hands free Mode, 96ms tail-length
- Voice Activity Detection (VAD) / Comfort Noise Generation (CNG) / Background Noise Estimation (BNE) / Noise Reduction (NR)
- Packet Loss Concealment (PLC)
- Dynamic Adaptive Jitter Buffer
- DTMF: In-band, Out of Band (RFC2833) / SIP INFO
- Omnidirectional pickup: pickup distance 5 m

### Networking

- 802.3af PoE
- IP Configuration: Static / DHCP / PPPoE
- Network Access Control: 802.1x
- VPN: L2TP (Basic Unencrypted) / OpenVPN
- VLAN: 802.1p/q
- QoS: DSCP

### Protocols

- SIP2.0 over UDP/TCP/TLS
- RTP/RTCP/SRTP
- STUN
- DHCP
- PPPoE
- 802.1x
- OpenVPN
- SNTP
- FTP/TFTP
- HTTP/HTTPS
- TR069

### Deployment & Maintenance

- Auto-Provisioning via FTP/TFTP/HTTP/HTTPS/DHCP/TR069/SIP PNP
- Web Management Portal
- Web-based Packet Dump
- Configuration Backup/Restore
- Firmware Upgrade

### Physical Specifications

- Keypad:1or2 DSS Keys (Speed Dial)
- RJ45 Ethernet Jacket x2: Network x1 (802.3AF POE Enabled), PC x1 (Bridged to Network)
- Main Chipset: Broadcom
- Passive Switch(short-circuit output): Normally Open and Normally Closed highest at 30V/1A AC/DC
- Output interface for active speaker
- Audio record output interface
- 2 embedded short circuit input interfaces
- 2 embedded short circuit output interfaces
- Speaker: 3W/4Ω
- Cables: CAT5 or better
- Power Supply: 9V~16V/1A DC or PoE
- Standby power consumption: 1.54W
- The call intercom of power consumption: 1.81W
- Shell Material: Front plate, aluminum alloy. Back plate, Cast aluminum
- Protection level: IP65 and IK10
- Working Temperature: -40~70°C
- Storage Temperature: -40~70°C
- Working Humidity: 10~90%



## Intelligent Security Video Intercom –DP28 The best choice of Video SIP intercom



Safety city intercom



Bank intercom



Station intercom

**VOPTech DP28 SIP video Intercom, carrying VOPTech's 6+ years industrial experience in technology and product design, Combing IP technology together with industrial intercom perfectly. DP28 SIP intercom can be easily configured in varies application scenarios like bank, schools, mining, cities, etc.**



### SIP

The most popular and compatible standard protocol - SIP - enables delivery of worry free communication and connectivity.



### Advanced Protection

Enclosure designed on International Protection (IP) markings to protect against intrusion – accidental or intentional - waterproofed to IP65 and anti-collision up to IK10.



### HD Video

The 1280x720p (720p – progressive scan) camera produces vibrant highquality HD video and captures motion effortlessly.



### HD Voice

High definition voice using wideband G.722 coding produces clearer sound quality and extends the frequency range.



### Noise Reduction

The embedded processing module reduces environmental noise and improves voice recognition up to 5 meters (approx. 16 feet).



### Anti-tamper

Alarm sounds if/when cover is removed from the housing and reports the action to the control center.



### Multi-function

The system is capable of performing multiple functions, i.e. video intercom and door phone and single device paging, and can be configurable with additional features.



### Wide Range temperature adaptability

The system design adapts to operating under various environmental conditions and temperatures (supports temperatures ranging from 40 to +70 Celsius.)

### Generic

- 2 SIP Lines
- PoE Enabled
- Full-duplex speakerphone (HF)
- Intelligent DSS Keys (Speed Dial/intercom etc)
- Integrated Noise Reduction with dual MICs
- Omnidirectional pickup
- 2 embedded short-circuit output relays
- Embedded anti-dismantlement alarm
- External Power Supply
- Record voice and video during calls(optional)
- All in ONE intercom and paging service and Security Linkage
- Wall-mount/In-Wall installation

### Call Features

- Voice/video Intercom
- Speed Dial(speed dial key)
- Auto-Answering (per line)
- Voice Message (on server)
- Barge in and calls switched automatically
- Local 3-way Conference

### Phone Features

- High Quality video calls
- Support SIP 2.0 and related RFCs
- Programmable DSS keys
- Network Time Synchronization
- Action URL / Active URI

### Audio

- Wideband CODEC: G.722
- Narrowband CODEC: G.711a/u, G.723.1, G.726-32K, G.729AB, iLBC, AMR
- Full-duplex Acoustic Echo Canceller (AEC) – Hands free Mode, 128ms tail-length
- Voice Activity Detection (VAD) / Comfort Noise Generation (CNG) / Background Noise Estimation (BNE) / Noise Reduction (NR)
- Packet Loss Concealment (PLC)
- Dynamic Adaptive Jitter Buffer
- DTMF: In-band, Out of Band (RFC2833) / SIP INFO
- Omnidirectional pickup: pickup distance 5 m

### Video • Video codec: H.264 / H.263

- Image codec: JPEG/PNG/BMP/GIF
- Video format: MP4/3GP/FLV
- Video call resolution: QCIF / CIF / VGA / 4CIF / 720P
- Bandwidth selection: 64kbps~4Mbps
- Frame rate selection: 10~30fps

### Networking

- 802.3af PoE
- IP Configuration: Static / DHCP / PPPoE
- Network Access Control: 802.1x
- VPN: L2TP / PPTP / IPsec
- VLAN: 802.1p/q
- QoS: DSCP

### Protocols

- SIP2.0 over UDP/TCP/TLS
- RTP/RTCP/SRTP
- STUN
- DHCP
- PPPoE
- 802.1x
- OpenVPN
- SNTP
- FTP/TFTP
- HTTP/HTTPS
- Tr069

### Deployment & Maintenance

- Auto-Provisioning via FTP/TFTP/HTTP/HTTPS/DHCP/TR069/SIP PNP
- Web Management Portal
- Web-based Packet Dump
- Configuration Backup/Restore
- Firmware Upgrade

### Physical Specifications

- Keypad:1or2 DSS Keys (Speed Dial)
- 1 10/100/1000BASE-T RJ45 Ethernet interface, Auto MDIX
- PoE: 802.3af, Class 3
- Main Chipset: Freescale quad cores 1GHz CPU
- SDRAM: 1GB DDR3
- Flash: 4GB
- TF card: embedded 32GB(optional)
- Camera: 1284 x 724, CMOS(1/4inch)
- Passive Switch(short-circuit output): Normally Open and Normally Closed highest at 30V/1A AC/DC
- View angle:120° (H)109° (V)
- IRNIGHT Vision:yes
- Audio Amplifier: 3W
- Cables: CAT5 or better
- Power Supply: 12V ±15%/1A DC or PoE
- Shell Material: Aluminum Cover and Cast-Aluminum back case
- Protection level: IP65 and Ik10
- Storage Temperature:-40~70°C
- Working Humidity: 10~90%
- Overall Dimension: 223 x 130 x 74mm (W x H x L)
- Package Weight:1.45KG



In-wall



Wall-mounted

### Intelligent Security Video Door Phone – DP31 The best choice of Sip Video Door Phone



Office



School



Airport

Backed by VOPTech's 6+ years of technology development and product designing, the DP31 offers next generation of entry control and monitoring. The DP31 combines IP technology with industry standards for access and physical security to deliver a system that improves communication for tenants, guests and visitors. The DP31's flexibility, ease of use and simple installation makes it ideal for enhancing security posture in schools, offices, and other public facilities.

SIP

#### SIP

The most popular and compatible standard protocol - SIP - enables delivery of worry free communication and connectivity.



#### Advanced Protection

Enclosure designed on International Protection (IP) markings to protect against intrusion – accidental or intentional - waterproofed to IP65 and anti-collision up to IK10.



#### HD Video

The 1280x720p (720p – progressive scan) camera produces vibrant highquality HD video and captures motion effortlessly.



#### HD Voice

High definition voice using wideband G.722 coding produces clearer sound quality and extends the frequency range.



#### Noise Reduction

The embedded processing module reduces environmental noise and improves voice recognition up to 5 meters (approx. 16 feet).



#### Anti-tamper

Alarm sounds if/when cover is removed from the housing and reports the action to the control center.



#### Multi-function

The system is capable of performing multiple functions, i.e. video intercom and door phone and single device paging, and can be configurable with additional features.



#### Wide Range temperature adaptability

The system design adapts to operating under various environmental conditions and temperatures (supports temperatures ranging from 40 to +70 Celsius.)

### Generic

- 2 SIP Lines
- PoE Enabled
- Full-duplex speakerphone (HF)
- Numeric keypad (Dial pad or Password input)
- Intelligent DSS Keys (Speed Dial/intercom etc)
- Integrated Noise Reduction with dual MICs
- Omnidirectional pickup
- 1 embedded indoor switch interface
- 1 embedded door switch relay
- 2 embedded short-circuit output relays(optional)
- Embedded anti-dismantlement alarm
- External Power Supply
- Record voice and video during calls(optional)
- Status indication with icons: door opened, talking, incoming calls, network on/SIP registration on
- Access control-by call, code, RFID card, indoor switch
- All in ONE-door access, intercom and paging service
- Dusty free on the stainless panel,water proof followed by IP65,and mechanical design for IK10 approval, CE/FCC certifications
- Wall-mount/In-Wall installation

### Call Features

- Voice/video Intercom
- Speed Dial(speed dial key)
- Auto-Answering (per line)
- Voice Message (on server)
- Barge in and calls switched automatically
- Local 3-way Conference
- Hotline

### Phone Features

- High Quality video calls
- Support SIP 2.0 and related RFCs
- Call log (dialed/incoming/missed)
- Open Door Logs
- Support RFID Card issues (1999 entries)
- Programmable DSS keys
- Network Time Synchronization
- Action URL / Active URI

### Audio

- Wideband CODEC: G.722
- Narrowband CODEC: G.711a/u, G.723.1, G.726-32K, G.729AB, iLBC, AMR
- Full-duplex Acoustic Echo Canceller (AEC) – Hands free Mode, 128ms tail-length
- Voice Activity Detection (VAD) / Comfort Noise Generation (CNG) / Background Noise Estimation (BNE) / Noise Reduction (NR)
- Packet Loss Concealment (PLC)
- Dynamic Adaptive Jitter Buffer
- DTMF: In-band, Out of Band (RFC2833) / SIP INFO
- Omnidirectional pickup: pickup distance 5 m

### Video

- Video codec: H.264 / H.263
- Image codec: JPEG/PNG/BMP/GIF
- Video format: MP4/3GP/FLV
- Video call resolution: QCIF / CIF / VGA / 4CIF / 720P

- Bandwidth selection: 64kbps~4Mbps
- Frame rate selection: 10~30fps

### Networking

- 802.3af PoE
- IP Configuration: Static / DHCP / PPPoE
- Network Access Control: 802.1x
- VPN: L2TP / PPTP / IPSec
- VLAN: 802.1p/q
- QoS: DSCP

### Protocols

- SIP2.0 over UDP/TCP/TLS
- RTP/RTCP/SRTP
- STUN
- DHCP
- PPPoE
- 802.1x
- OpenVPN
- SNTP
- FTP/TFTP
- HTTP/HTTPS
- TR069

### Deployment & Maintenance

- Auto-Provisioning via FTP/TFTP/HTTP/HTTPS/DHCP/TR069/SIP PNP
- Web Management Portal
- Web-based Packet Dump
- Configuration Backup/Restore
- Entry Log Export
- Access Table Export/Import
- Firmware Upgrade
- Syslog (include Open Door Log)

### Physical Specifications

- Keypad: 13 keys, including 12 Standard Phone Digits keys 1 Hands-free key or DSS Keys (Speed Dial)
- 1 10/100/1000BASE-T RJ45 Ethernet interface, Auto MDIX
- PoE: 802.3af, Class 3
- Main Chipset: Freescale quad cores 1GHz CPU
- SDRAM: 1GB DDR3
- Flash: 4GB
- TF card: embedded 32GB
- Camera: 1280 x 760, CMOS
- Passive Switch(short-circuit output): Normally Open and Normally Closed highest at 30V/1A AC/DC
- Active Switched Output: 12V/700mA DC
- RFID/IC Card: EM4100(125kHz),MIFARE ONE(13.56MHz), NFC(optional)
- Audio Amplifier: 3W
- Cables: CAT5 or better
- Power Supply: 12V ± 15%/1A DC or PoE
- Shell Material: Aluminum Cover and Cast-Aluminum back case
- Protection level: IP65 and IK10
- Storage Temperature:-40~70°C
- Working Humidity: 10~90%
- Overall Dimension: 223 x 130 x 74mm (W x H x L)
- Package Weight:1.85KG

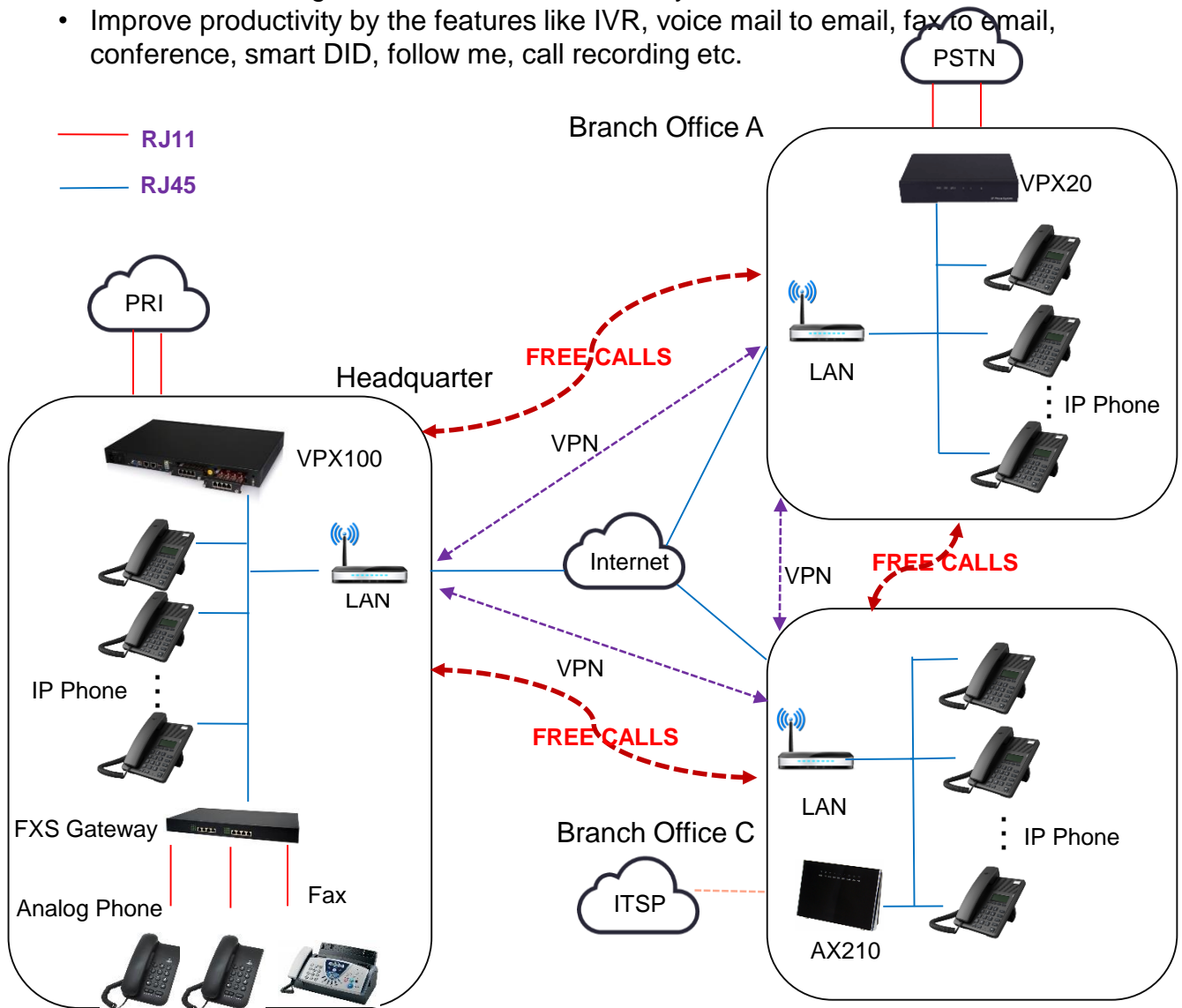
Work is no longer about one place, but an activity could be done from almost anywhere. And more and more businesses are embracing the idea that remote office connectivity greatly saves them costs by eliminating site to site calling charges, and dramatically improves efficiency as workers at multiple locations can reach each other easily.

If you have multiple office locations, VOPTech IPBX gives you the convenience connecting these offices economically and effectively. You are allowed to enjoy a cost-effective and easy-to-deploy remote office solution with the use of the IP PBX.

Remote office solution helps people work together to solve problems, make decisions, and present ideas faster regardless of long distance. Remote office solution also boosts flexibility and productivity by delivering secure and comprehensive data and services to all the workers in multiple branches.

### Solution Benefits:

- Cutting internal phone bill, saving long distance phone bill by using SIP trunk
- Reducing the work of wiring, saving cost
- Centralized management via web browser, easy maintenance
- Improve productivity by the features like IVR, voice mail to email, fax to email, conference, smart DID, follow me, call recording etc.



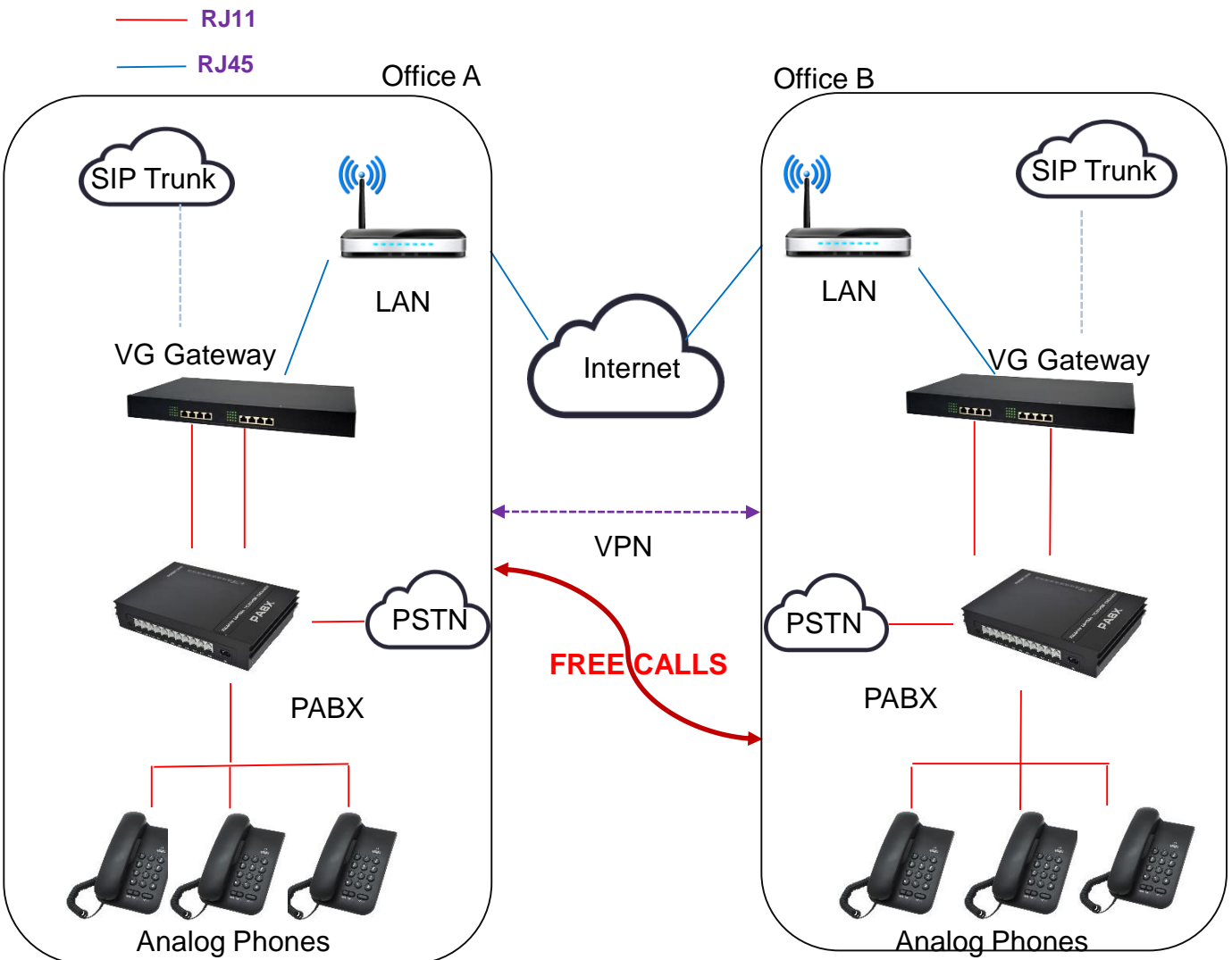


## Multi-site connection for gateways with PABX

In most cases, enterprises deploy IP PBX solution to connect multi sites together. It helps to reduce the communication cost and improve the effectiveness. However, it might be a big cost to replace the traditional PABX and analog phones. There is a cost effective alternative by deploying VG gateways in multi sites and connect multi PABX together remotely.

### Solution Benefits:

- Cutting phone bill via connecting the phone system together with remote office
- Low investment by keeping using the exist analog equipment
- Using SIP trunk over analog PABX, saving phone cost

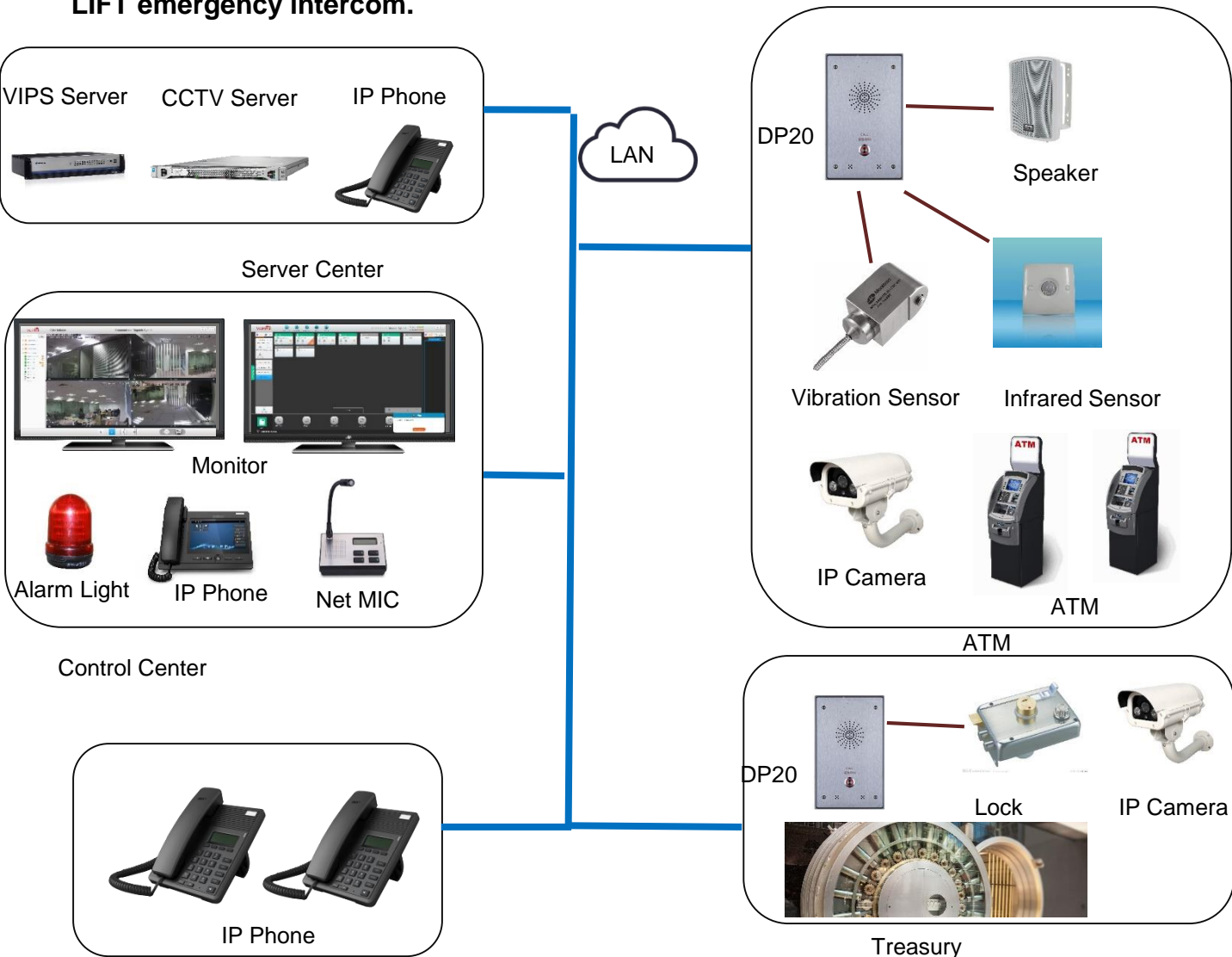


## Bank Intercom Solution

In unexpected situations, such as a problem withdrawing cash, retention of your card, a technical fault or an act of violence, both the ATM operator and client will appreciate immediate connection with assistance services. With one button and linked to CCTV system, the VOPTech VIPS system is an ideal solution, which is resistant to vandalism and weather conditions.

Bank staff can broadcast through the speaker attached to DP20 through his desktop phone.

**This solution is also applicable to PRISON, HOSPITAL, HIGH WAY, AIRPORT and LIFT emergency intercom.**



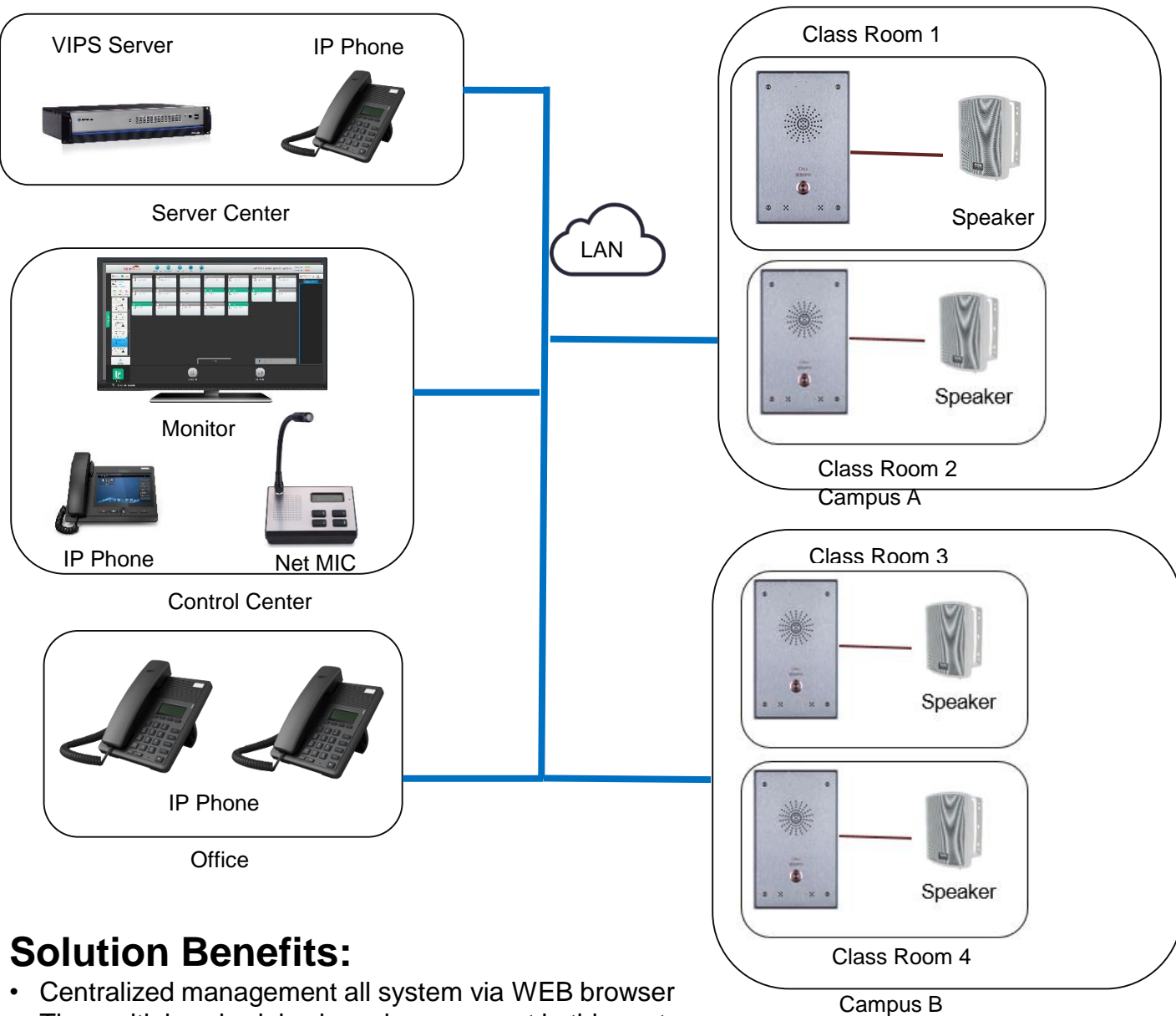
## Solution Benefits:

- Centralized management all system via WEB browser
- Based on SIP protocol, compatible with third party SIP PBX
- Emergency intercom, video and audio linkage, alarm alert, paging, video and audio recording etc.

## School PA Solution

The PA system is the foremost to a school for it has such demands as to broadcast the campus culture, the English listening and the ringing of the bells, etc, which can be met by most of the PA system manufacturer. However, SPON supply the best solution for school PA system with its additional integration of intercom system

**This solution is also applicable to HOTEL, HOSPITAL, FACTORY, AIRPORT etc.**



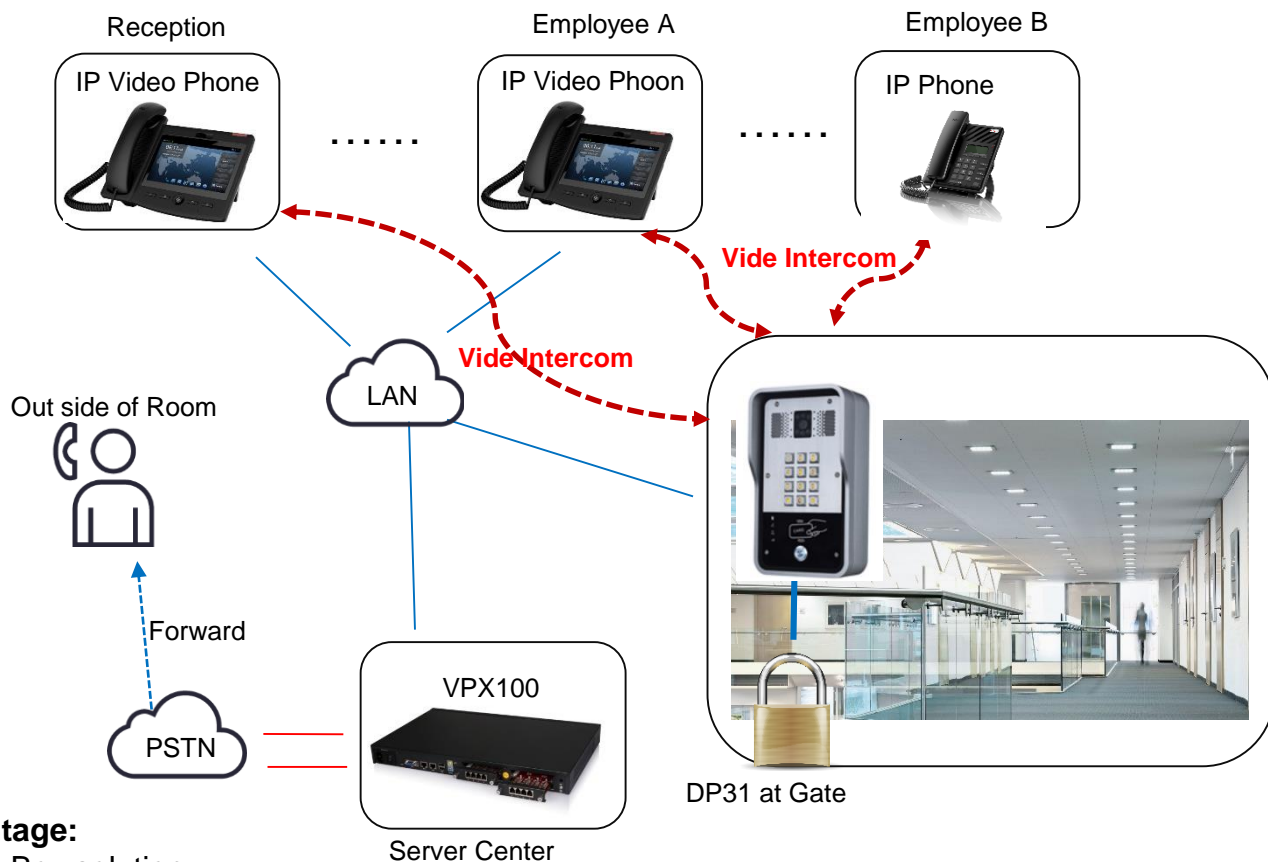
## Solution Benefits:

- Centralized management all system via WEB browser
- The multiple schedules have been pre-set in this system.
- The classes can be grouped freely; numerous programs can be played at one time to the grouped classes
- Full duplex talking between the terminal in teaching area
- SIP Phone can monitor terminals for evaluating the teaching.
- The programs can be simultaneously broadcast to several campuses.

## Door Access Control

External door intercoms must meet many expectations. Their primary function is to control access to the building or office and connect visitors with people inside, in a manner that is comfortable for both sides.

The VOPTech DP31 with a keypad, camera and card reader installed in the wall by the entrance – is a typical solution for building entrances. Employees and passengers are sure to appreciate the elegant design and functions. Direct dial buttons will connect visitors with personnel inside the building. If the station is unmanned, the passenger will be connected to the central control center or a call center. The other party can then easily open the door for the visitor from an IP phone or mobile. The visitor's identity can also be verified visually using a video-telephone. Employees can simply open the door using a card or numerical code.

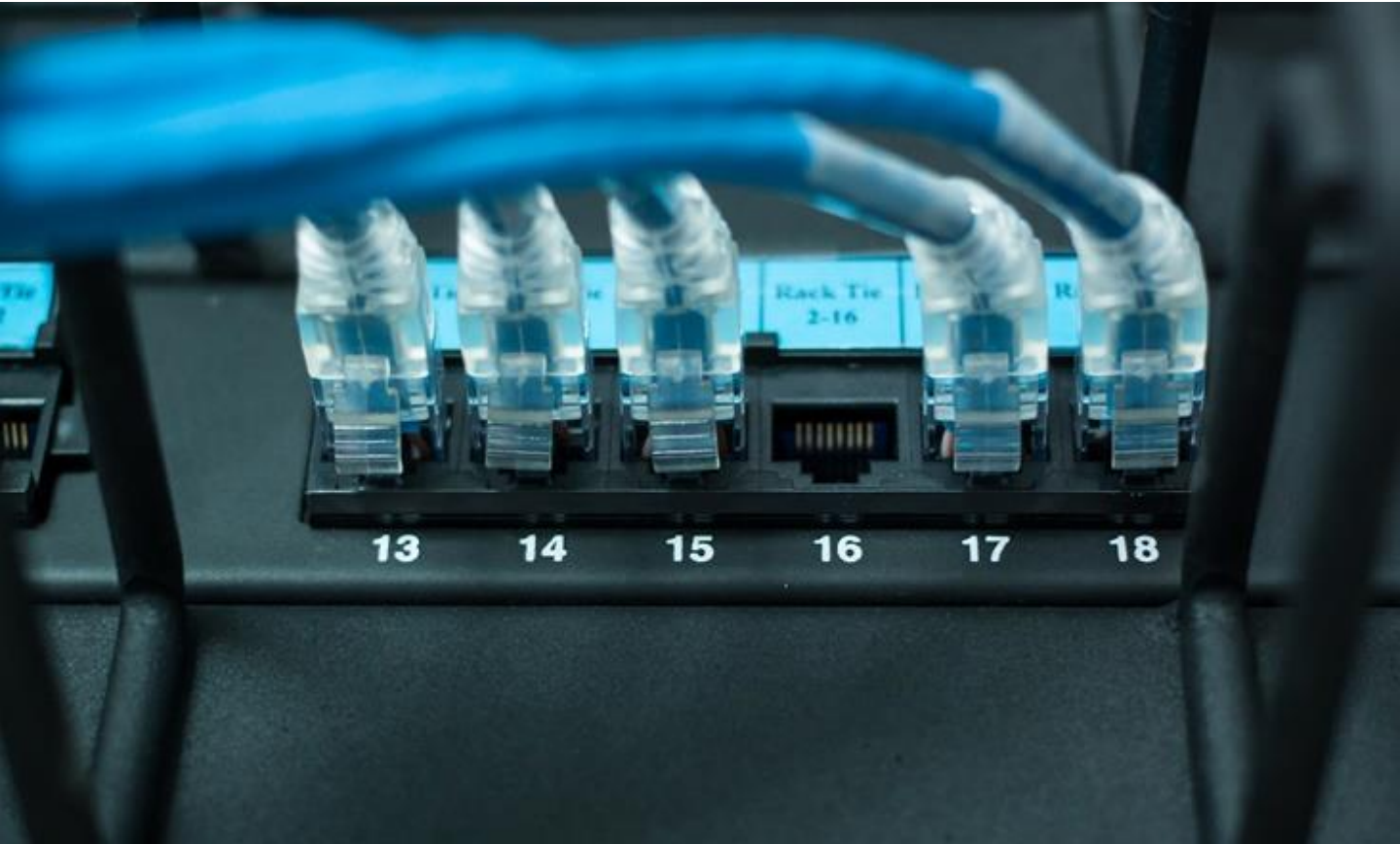


### Advantage:

- One Box solution
- Card reader, keypad, camera,
- Full duplex audio
- Video
- Remote administration
- Indoor/outdoor installation
- Integrated with SIP PBX

### Areas of Use:

- Apartment
- Residential complexes
- Government institutions
- Educational facilities
- Hospitals



## ABOUT VOPTECH

VOPTech is the Professional SIP developer in global market. We have been keeping innovating with customer's needs oriented , working with partners to establish a total solution based on SIP technology.

With over 6 years' experience of R&D , manufacturing and service in VoIP filed ; mission of creating the biggest value for SIP application .VOPTech benefits customers from flexibility and wide range applicable SIP solutions including IP Phone system, PA system, Intercom system as well as hospitality phone system.

Creating and sharing values with partners is our mission.

*For further information, please contact:*

**VOPTECH**

**SIP Solutions Expert**

Head Office  
R201, Deyefeng Business Center,  
Gongyuan Road, Baoan  
District, Shenzhen, P.R.China  
Tel: 86-755-27668969  
Email: sales@voptech.com